

LINC FEED 45

Spare Parts.....	1
LINC FEED 45	1
Figure A-B: Machine Assembly	2
Figure C: Wire Drive Assembly	3
Electrical Schematic	4
LINC FEED 45	4
WEEE	5



Lincoln Electric Bester Sp. z o.o.
ul. Jana III Sobieskiego 19A, 58-260 Bielawa, Poland
www.lincolnelectric.eu

Spare Parts

SP50211 Rev. 2
07/03

LINC FEED 45

ASSEMBLY PAGE NAME			Machine Assembly	Wire Drive Assembly					
CODE NO.:	K NO.:	FIGURE NO.:	A-B	C					
50211	K14072-1	LINC FEED 45	1	1					

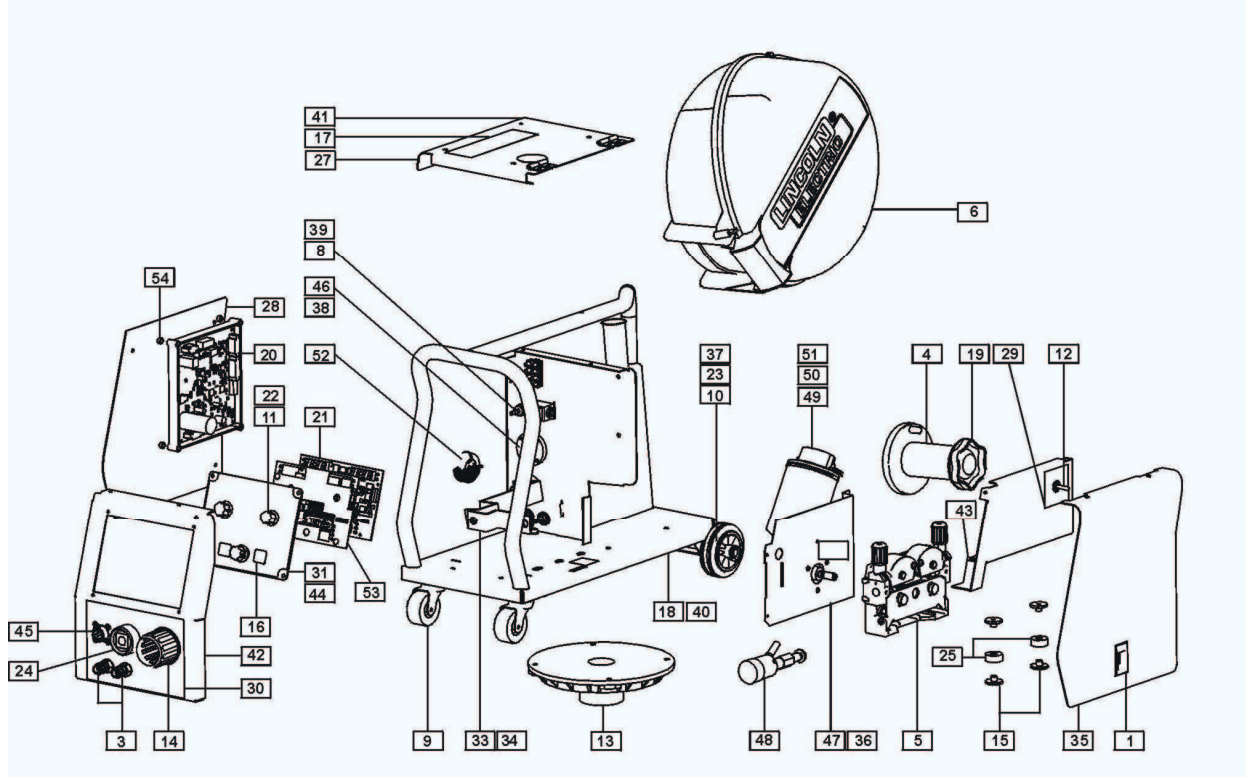


Figure A

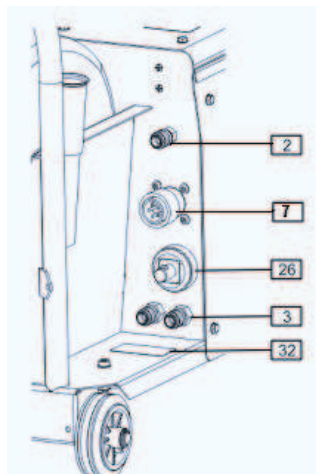


Figure B

Figure A-B: Machine Assembly

Item	Description	Part Number	QTY	1	2	3	4
1	LOCK	0654-610-004R	1	X			
2	QUICK CONNECTOR MALE	0744-000-151R	1	X			
3	QUICK CONNECTOR FEMALE	0744-000-152R	4	X			
4	WIRE REEL SPINDLE	0744-000-192R	1	X			
5	WIRE DRIVE	0744-000-241R	1	X			
6	PLASTIC SHROUD ASSEMBLY	R-0010-178-1R	1	X			
7	SOCKET MALE	1158-641-110R	1	X			
8	GAS SOLENOID	0972-423-038R	1	X			
9	FRONT WHEEL	1029-660-003R	2	X			
10	REAR WHEEL	1029-660-081R	2	X			
11	PROTECTION WASHER	0744-200-108R	1	X			
12	SWITCH	1158-650-022R	1	X			
13	PIVOT TOP PART	1361-598-180R	1	X			
14	EURO SLEEVE	1361-599-708R	1	X			
15	SLEEVE	1361-599-720R	4	X			
16	RUBBER BUTTON	1373-182-005R	2	X			
17	WARNING DECAL	2719-107-728R	1	X			
18	WARNING DECAL	2719-107-732R	1	X			
19	PLASTIC CAP	B11035-1	1	X			
20	CONTROL PC BOARD	R-6042-053-1R	1	X			
21	UI PC BOARD	R-6042-054-1R	1	X			
22	KNOB	9ET13639-3R	3	X			
23	WASHER	C-1661-004-5R	2	X			
24	DINSE SOCKET	C-2986-001-3R	1	X			
25	SLEEVE	D-1869-033-3R	2	X			
26	SOCKET	D-2985-002-1R	1	X			
27	HINGE	D-3574-007-1/33R	2	X			
28	LEFT PANEL	R-1019-227-1R	1	X			
29	STICKER	R-0010-282-1R	1	X			
30	NAME PLATE	R-0010-284-1R	1	X			
31	UI LABEL	R-0010-285-1R	1	X			
32	STICKER	R-0010-290-1R	1	X			
33	CONDUCTOR RAIL	R-1010-039-1R	1	X			
34	CONDUCTOR RAIL	R-1010-040-1R	1	X			
35	RIGHT PANEL	R-1019-224-1R	1	X			
36	DIVIDER	R-1019-207-1/08R	1	X			
37	AXLE	R-2013-021-1R	1	X			
38	ALU RING	R-2013-032-1R	1	X			
39	COUPLER	R-2013-060-1R	1	X			
40	BASE	R-3019-156-1/08R	1	X			
41	COVER	R-3019-162-1/02R	1	X			
42	FRONT PANEL	R-3019-168-1/08R	1	X			
43	DIVIDER	R-3019-169-1/08R	1	X			
44	PLATE	R-3019-170-1/08R	1	X			
45	REMOTE SOCKET	1158-641-149R	1	X			
46	HARNESS (NON SHOWN)	R-5041-171-1R	1	X			
47	MOTOR	R-8040-024-3R	1	X			
48	EURO SOCKET	R-8040-140-3R	1	X			
	OUTLET GUIDE	R-2010-006-2R	1	X			
49	MAGNETIC RING	0943-719-005R	1	X			
50	TACHO CAP	0744-200-008R	1	X			
51	HALL SENSOR	0943-719-008R	1	X			
52	SUPPRESSION CHOKE	R-5041-228-1R	1	X			
53	SHIELD PLATE	R-8040-298-1R	1	X			
54	SPACER	1131-155-001R	4	X			
55	UI BOARD HARNESS (NON SHOWN)	R-5041-252-1R	1	X			

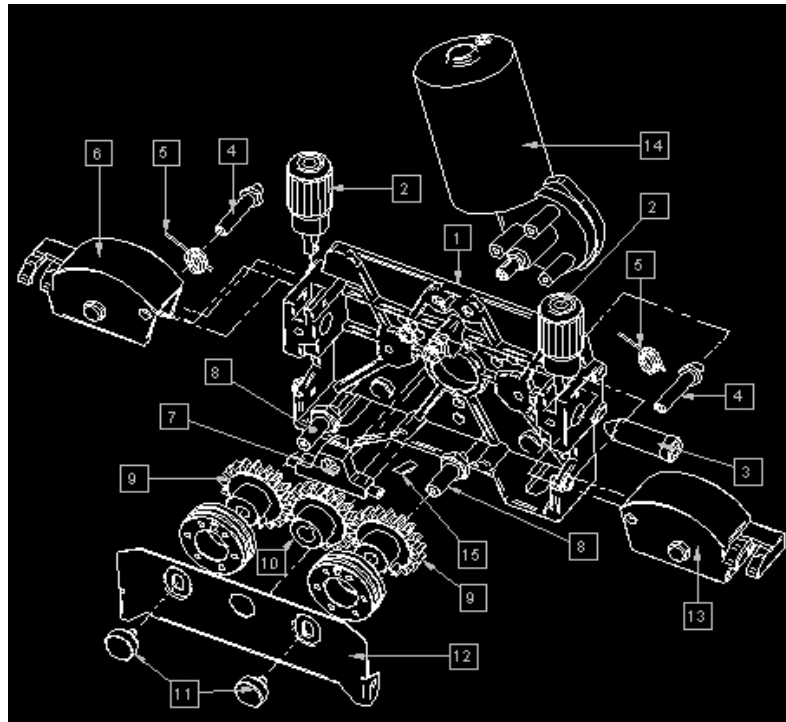


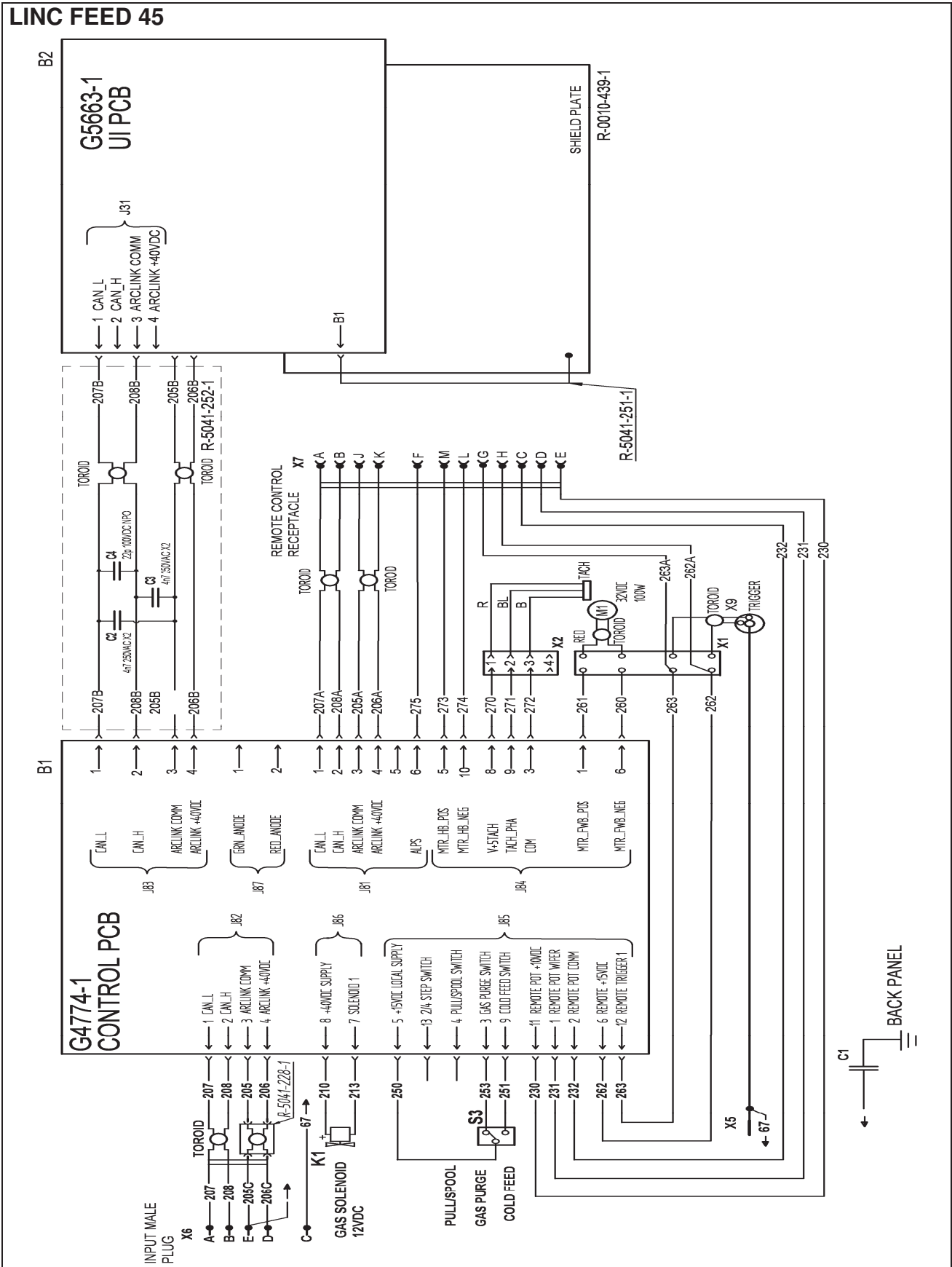
Figure C

Figure C: Wire Drive Assembly

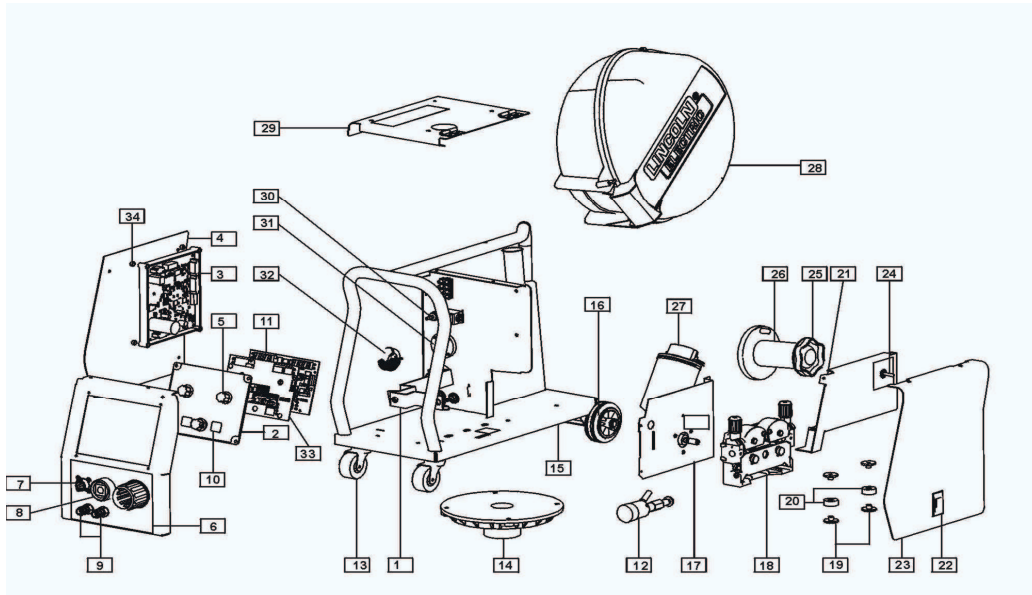
Item	Description	Part Number	QTY	1	2	3	4
1	FEED PLATE	0646-233-002R	1	X			
2	FIXING ARM COMPL.	0646-233-015R	2	X			
3	INLET GUIDE	0646-233-025R	1	X			
4	AXIS PRESSURE ARM	0646-233-003R	2	X			
5	SPRING PRESSURE ARM	0646-233-013R	2	X			
6	PRESSURE ARM COMPL.L	0646-233-007R	1	X			
7	INTERMEDIATE GUIDE	0646-233-023R	1	X			
8	AXIS DRIVE ROLL	0646-233-020R	2	X			
9	GEAR WHEEL ROLL	0646-231-090R	2	X			
10	GEAR WHEEL MOTOR	0646-233-028R	1	X			
11	FIXING CAP	0646-233-022R	2	X			
12	METAL COVER	0646-233-027R	1	X			
13	PRESSURE ARM COMPL.R	0646-233-005R	1	X			
14	WIRE FEED MOTOR	R-8040-024-3R	1	X			
15	WOODRUFF KEY	0646-231-102R	1	X			

Electrical Schematic

LINC FEED 45



WEEE



	Recycle					ST				
	Ref.	Fe	Al	Cu	Brass	Boards	Plastics	Liquid Cristal	External Electric Cables	Capacitors
Base Assembly	15	X								
Bolt	22						X			
Brake	25,26						X			
Cover	2	X								
Divider	17, 21	X								
Euro Socket	12				X		X			
Front Panel	6	X								
Knob	5						X			
Left Side Panel	4	X								
Motor	27	X		X						
P.C. Board	3					X				
P.C. Board	11					X				
Quick Coupling	9				X					
Rail	1	X		X						
Control Socket	7, 31	X					X			
Right Side Panel	23	X								
Rotary Bracket	14						X			
Rubber Button	10						X			
Gas Switch	30	X		X	X					
Spool Cover	28						X			
Switch	24	X			X		X			
Top Panel	29	X								
Washer	19, 20						X			
Welding Socket	8				X		X			
Wheels	13,16	X					X			
Wire Feeder	18	X								
Suppression choke	32			X						
Shield Plate	33					X				
Spacer	34						X			

ECM Electronic



Autoryzowany serwis spawarek oraz zgrzewarek krajowych i zagranicznych. Automatyka przemysłowa.

Dystrybucja, serwis, sprzedaż - kontakt:

www: ecm-electronic.pl, www.spaw-serwisch.pl

e-mail: spawserwisch@gmail.com, biuro@ecm-electronic.pl

tel. kont.: +48 501 283 621, +48 34 368 1578 (z fax.)